

# PTX Christmas Tree

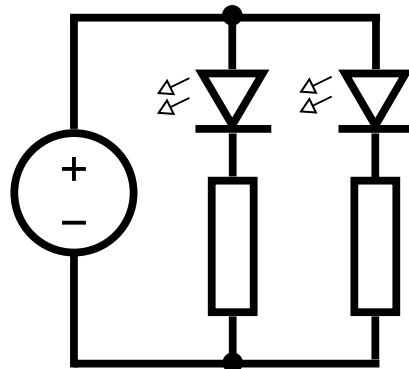
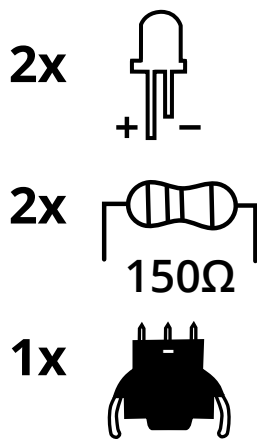


cutting template

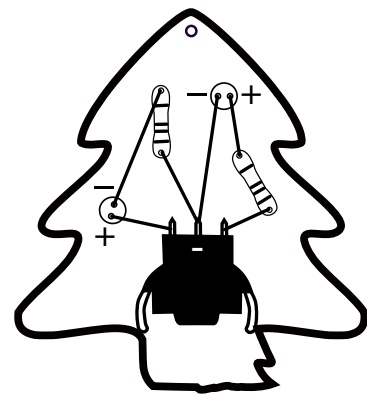
cc-by-sa: [mcm@pengutronix.de](mailto:mcm@pengutronix.de)

- cut
- light engraving
- dark engraving

We recommend to use beech plywood and a visit of your local hacker-/makerspace that offers a lasercutter.



circuit



soldering site



Pengutronix e.K.  
Steuerwalder Straße 21  
31137 Hildesheim  
Germany

✉ [info@pengutronix.de](mailto:info@pengutronix.de)